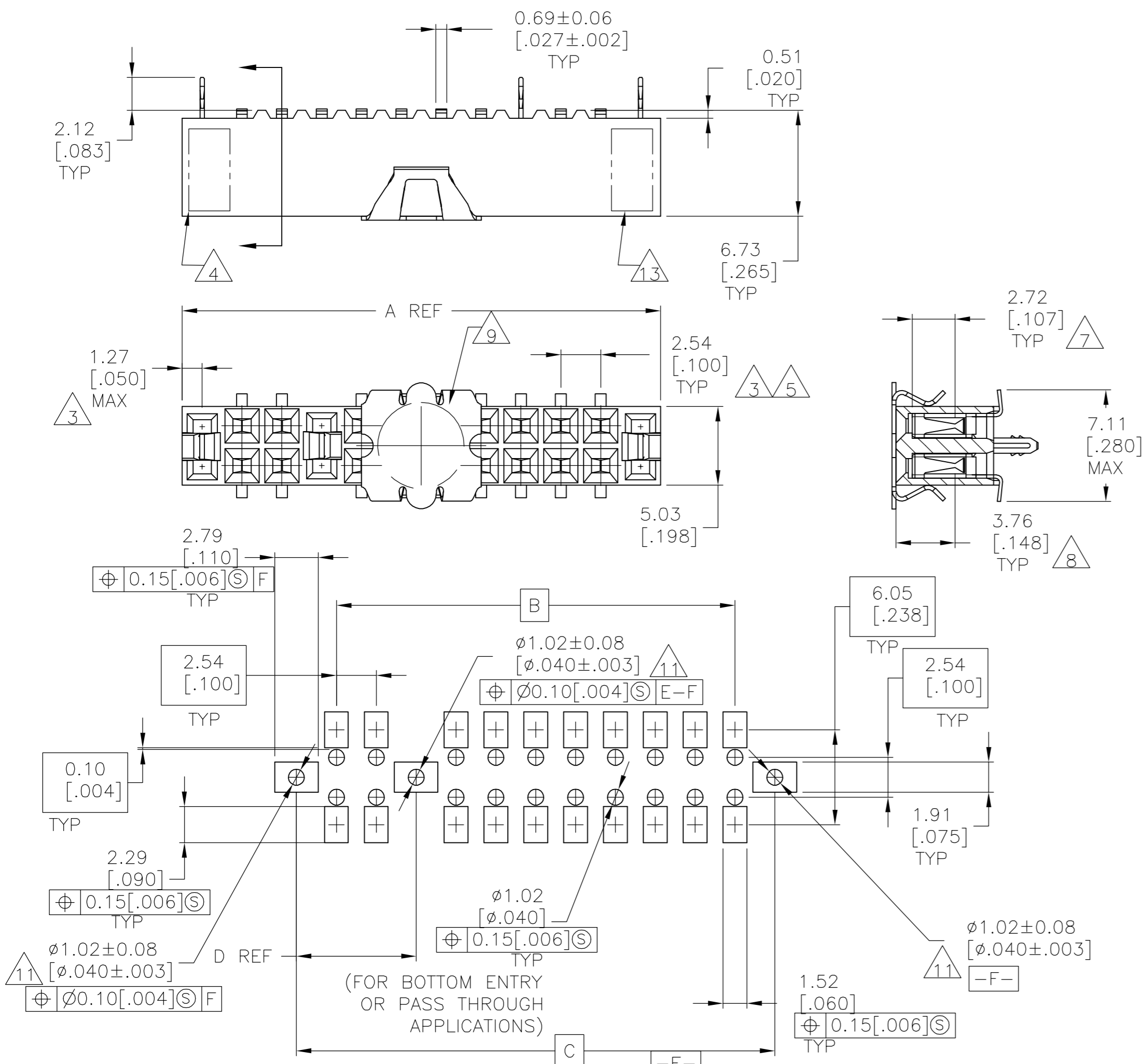


THIS DRAWING IS UNPUBLISHED. RELEASED FOR PUBLICATION
 © COPYRIGHT BY TYCO ELECTRONICS CORPORATION. ALL RIGHTS RESERVED.

LOC	DIST	REVISIONS					
AD	00	P	LTR	DESCRIPTION	DATE	DWN	APVD
		N1		ECO 05 007253	12APR06	BSV	JO



2	53.34 [2.100]	106.68 [4.200]	99.06 [3.900]	109.22 [4.300]	80	4-147103-0
2	50.80 [2.000]	104.14 [4.100]	96.52 [3.800]	106.68 [4.200]	78	3-147103-9
2	50.80 [2.000]	101.60 [4.000]	93.98 [3.700]	104.14 [4.100]	76	3-147103-8
2	48.26 [1.900]	99.06 [3.900]	91.44 [3.600]	101.60 [4.000]	74	3-147103-7
2	48.26 [1.900]	96.52 [3.800]	88.90 [3.500]	99.06 [3.900]	72	3-147103-6
2	45.72 [1.800]	93.98 [3.700]	86.36 [3.400]	96.52 [3.800]	70	3-147103-5
2	10	88.90 [3.500]	83.82 [3.300]	91.44 [3.600]	68	3-147103-4
2	10	86.36 [3.400]	81.28 [3.200]	88.90 [3.500]	66	3-147103-3
2	10	83.82 [3.300]	78.74 [3.100]	86.36 [3.400]	64	3-147103-2
2	10	81.28 [3.200]	76.20 [3.000]	83.82 [3.300]	62	3-147103-1
2	10	78.74 [3.100]	73.66 [2.900]	81.28 [3.200]	60	3-147103-0
2	10	76.20 [3.000]	71.12 [2.800]	78.74 [3.100]	58	2-147103-9
2	10	73.66 [2.900]	68.58 [2.700]	76.20 [3.000]	56	2-147103-8
2	10	71.12 [2.800]	66.04 [2.600]	73.66 [2.900]	54	2-147103-7
2	10	68.58 [2.700]	63.50 [2.500]	71.12 [2.800]	52	2-147103-6
2	10	66.04 [2.600]	60.96 [2.400]	68.58 [2.700]	50	2-147103-5
2	10	63.50 [2.500]	58.42 [2.300]	66.04 [2.600]	48	2-147103-4
2	10	60.96 [2.400]	55.88 [2.200]	63.50 [2.500]	46	2-147103-3
2	10	58.42 [2.300]	53.34 [2.100]	60.96 [2.400]	44	2-147103-2
2	10	55.88 [2.200]	50.80 [2.000]	58.42 [2.300]	42	2-147103-1
2	10	53.34 [2.100]	48.26 [1.900]	55.88 [2.200]	40	2-147103-0
2	10	50.80 [2.000]	45.72 [1.800]	53.34 [2.100]	38	1-147103-9
2	10	48.26 [1.900]	43.18 [1.700]	50.80 [2.000]	36	1-147103-8
2	10	45.72 [1.800]	40.64 [1.600]	48.26 [1.900]	34	1-147103-7
2	10	43.18 [1.700]	38.10 [1.500]	45.72 [1.800]	32	1-147103-6
2	10	40.64 [1.600]	35.56 [1.400]	43.18 [1.700]	30	1-147103-5
2	10	38.10 [1.500]	33.02 [1.300]	40.64 [1.600]	28	1-147103-4
2	10	35.56 [1.400]	30.48 [1.200]	38.10 [1.500]	26	1-147103-3
2	10	33.02 [1.300]	27.94 [1.100]	35.56 [1.400]	24	1-147103-2
2	10	30.48 [1.200]	25.40 [1.000]	33.02 [1.300]	22	1-147103-1
2	10	27.94 [1.100]	22.86 [0.900]	30.48 [1.200]	20	1-147103-0
2	10	25.40 [1.000]	20.32 [0.800]	27.94 [1.100]	18	147103-9
2	10	22.86 [0.900]	17.78 [0.700]	25.40 [1.000]	16	147103-8
2	10	20.32 [0.800]	15.24 [0.600]	22.86 [0.900]	14	147103-7
2	10	17.78 [0.700]	12.70 [0.500]	20.32 [0.800]	12	147103-6
2	10	15.24 [0.600]	10.16 [0.400]	17.78 [0.700]	10	147103-5
2	10	12.70 [0.500]	7.62 [0.300]	15.24 [0.600]	8	147103-4
2	10	10.16 [0.400]	5.08 [0.200]	12.70 [0.500]	6	147103-3
2	10	7.62 [0.300]	2.54 [0.100]	10.16 [0.400]	4	147103-2
2	10	5.08 [0.200]	-	7.62 [0.300]	2	147103-1



- 1 HOUSING: FLAME RETARDANT, GLASS FILLED, POLYESTER, COLOR: BLACK. CONTACT: PHOSPHOR BRONZE. VACUUM COVER: STAINLESS STEEL
- 2. CONTACT FINISH: 3.81-7.62 MICROMETERS (.000150-.000300) BRIGHT TIN-LEAD ALL OVER 1.27 MICROMETERS (.000050) MINIMUM NICKEL.
- 3 THESE DIMENSIONS PERTAIN TO CAVITY CENTERLINES ONLY NOT TO CONTACT LOCATIONS
- 4 PART NUMBER AND DATE CODE ARE MARKED IN APPROXIMATE LOCATION SHOWN.
- 5 TOLERANCE IS NON-CUMULATIVE.
- 6 2 POSITION DATE CODE IS MARKED OPPOSITE SIDE OF TYCO LOGO.
- 7 POINT-OF-MEASUREMENT DIMENSION FOR PLATING THICKNESS (INSIDE CONTACT BEAM).
- 8 POINT-OF-CONTACT DIMENSION.
- 9 $\phi 5.51 [0.217]$ MIN TARGET AREA FOR VACUUM PICK UP. COVER TO BE REMOVED AFTER SOLDERING.
- 10 NO CENTER HOLD DOWN.
- 11 HOLES $\phi 1.125 \pm 0.025 [0.0453 \pm 0.0010]$ DRILL SIZE [0.03-0.08 [0.001-.003] COPPER PLATING. 0.007 [0.003] MIN 60/40 TIN LEAD $\phi 0.94-1.09 [0.037-.043]$ AFTER PLATING, 0.25 [0.010] ANNULAR RING BOTH SIDES.
- 12. PACKAGED IN TUBES.
- 13 TYCO TRADEMARK AND CSA LOGO ARE MOLDED INTO HOUSING.
- 14 NO PART NUMBER REQUIRED ON THIS PART.
- 15 CONTACT FINISH: 3.81-7.62 MICROMETERS (.000150-.000300) MATTE TIN ALL OVER 1.27 MICROMETERS (.000050) MINIMUM NICKEL.
- 16 ROHS 2002/95/EC COMPLIANT.

THIS DRAWING IS A CONTROLLED DOCUMENT.		DWN M.BINNER 06NOV02	 Tyco Electronics Corporation Harrisburg, Pa 17105-3608
DIMENSIONS: mm [INCHES]		CHK J.OLSON 06NOV02	
TOLERANCES UNLESS OTHERWISE SPECIFIED:		APVD J.OLSON 06NOV02	NAME 108-25022
0 PLC ± -		PRODUCT SPEC	114-25018
1 PLC ± -		APPLICATION SPEC	114-25018
2 PLC ± 0.13 [0.005]		WEIGHT	-
3 PLC ± -		CUSTOMER DRAWING	SCALE 4:1
4 PLC ± -		SHEET 1 OF 2	REV N1
ANGLES ± -		RESTRICTED TO	
FINISH		NO OF POSN	
1		PART NUMBER	
2 15		147103-1	

THIS DRAWING IS UNPUBLISHED. RELEASED FOR PUBLICATION
 © COPYRIGHT BY TYCO ELECTRONICS CORPORATION. ALL RIGHTS RESERVED.

Loc	DIST	REVISIONS					
AD	00	P	LTR	DESCRIPTION	DATE	DWN	APVD
		-		SEE SHEET 1		-	-

FINISH	D	C	B	A	NO OF POSN	PART NUMBER
15	53.34[2.100]	106.68[4.200]	99.06[3.900]	09.22[4.300]	80	9-147103-0
15	50.80[2.000]	104.14[4.100]	96.52[3.800]	06.68[4.200]	78	8-147103-9
15	50.80[2.000]	101.60[4.000]	93.98[3.700]	04.14[4.100]	76	8-147103-8
15	48.26[1.900]	99.06[3.900]	91.44[3.600]	01.60[4.000]	74	8-147103-7
15	48.26[1.900]	96.52[3.800]	88.90[3.500]	99.06[3.900]	72	8-147103-6
15	45.72[1.800]	93.98[3.700]	86.36[3.400]	96.52[3.800]	70	8-147103-5
15	10	88.90[3.500]	83.82[3.300]	91.44[3.600]	68	8-147103-4
15	10	86.36[3.400]	81.28[3.200]	88.90[3.500]	66	8-147103-3
15	10	83.82[3.300]	78.74[3.100]	86.36[3.400]	64	8-147103-2
15	10	81.28[3.200]	76.20[3.000]	83.82[3.300]	62	8-147103-1
15	10	78.74[3.100]	73.66[2.900]	81.28[3.200]	60	8-147103-0
15	10	76.20[3.000]	71.12[2.800]	78.74[3.100]	58	7-147103-9
15	10	73.66[2.900]	68.58[2.700]	76.20[3.000]	56	7-147103-8
15	10	71.12[2.800]	66.04[2.600]	73.66[2.900]	54	7-147103-7
15	10	68.58[2.700]	63.50[2.500]	71.12[2.800]	52	7-147103-6
15	10	66.04[2.600]	60.96[2.400]	68.58[2.700]	50	7-147103-5
15	10	63.50[2.500]	58.42[2.300]	66.04[2.600]	48	7-147103-4
15	10	60.96[2.400]	55.88[2.200]	63.50[2.500]	46	7-147103-3
15	10	58.42[2.300]	53.34[2.100]	60.96[2.400]	44	7-147103-2
15	10	55.88[2.200]	50.80[2.000]	58.42[2.300]	42	7-147103-1
15	10	53.34[2.100]	48.26[1.900]	55.88[2.200]	40	7-147103-0
15	10	50.80[2.000]	45.72[1.800]	53.34[2.100]	38	6-147103-9
15	10	48.26[1.900]	43.18[1.700]	50.80[2.000]	36	6-147103-8
15	10	45.72[1.800]	40.64[1.600]	48.26[1.900]	34	6-147103-7
15	10	43.18[1.700]	38.10[1.500]	45.72[1.800]	32	6-147103-6
15	10	40.64[1.600]	35.56[1.400]	43.18[1.700]	30	6-147103-5
15	10	38.10[1.500]	33.02[1.300]	40.64[1.600]	28	6-147103-4
15	10	35.56[1.400]	30.48[1.200]	38.10[1.500]	26	6-147103-3
15	10	33.02[1.300]	27.94[1.100]	35.56[1.400]	24	6-147103-2
15	10	30.48[1.200]	25.40[1.000]	33.02[1.300]	22	6-147103-1
15	10	27.94[1.100]	22.86[.900]	30.48[1.200]	20	6-147103-0
15	10	25.40[1.000]	20.32[.800]	27.94[1.100]	18	5-147103-9
15	10	22.86[.900]	17.78[.700]	25.40[1.000]	16	5-147103-8
15	10	20.32[.800]	15.24[.600]	22.86[.900]	14	5-147103-7
15	10	17.78[.700]	12.70[.500]	20.32[.800]	12	5-147103-6
14	15	15.24[.600]	10.16[.400]	17.78[.700]	10	5-147103-5
14	15	12.70[.500]	7.62[.300]	15.24[.600]	8	5-147103-4
14	15	10.16[.400]	5.08[.200]	12.70[.500]	6	5-147103-3
14	15	7.62[.300]	2.54[.100]	10.16[.400]	4	5-147103-2
14	6	OBSOLETE	5.08[.200]	-	2	5-147103-1

THIS DRAWING IS A CONTROLLED DOCUMENT.		DWN M.BINNER 06NOV2002	 Tyco Electronics Corporation Harrisburg, Pa 17105-3608
DIMENSIONS: mm [INCHES]		CHK J.OLSON 06NOV02	
TOLERANCES UNLESS OTHERWISE SPECIFIED: 0 PLC ± - 1 PLC ± - 2 PLC ± 0.13[.005] 3 PLC ± - 4 PLC ± - ANGLES ± - FINISH		APVD J.OLSON 06NOV02	NAME RECEPTACLE ASSEMBLY, MOD IV, DOUBLE ROW, DUAL ENTRY, .100X.100CL, SURFACE MOUNT, AMPMODU
MATERIAL 		PRODUCT SPEC 108-25022	SIZE A2
		APPLICATION SPEC 114-25018	CAGE CODE 00779
		WEIGHT -	DRAWING NO C=147103
		CUSTOMER DRAWING	RESTRICTED TO -
			SCALE 4:1
			SHEET 2 OF 2
			REV N1

D

C

147103

B

A